

Bach Suite 1 in G major

Prelude: bar (measure) 26, 3d crotchet (1/4 note)

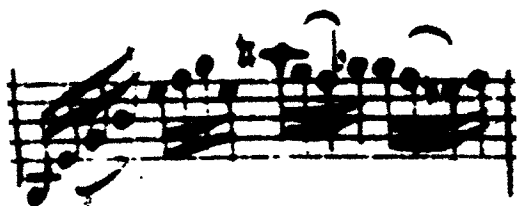
All manuscripts read: C#B A Bb. The first B as Bb is a definite mistake.

Here are the manuscripts of the 18th century:

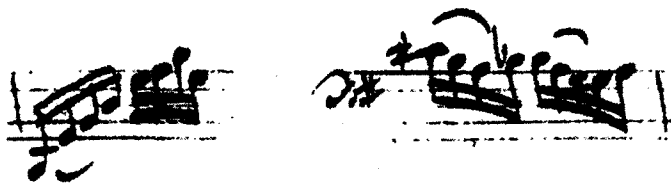
A) by Johann Peter Kellner 1726



B) by Anna Magdalena Bach c 1727 - 31



C) Anonymous c 1750 - 1800



D) Anonymous before 1800



E) The mistake in the first printed Edition, Paris c 1824

